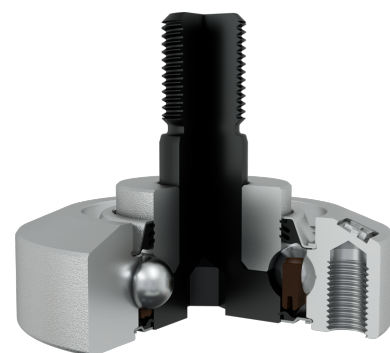
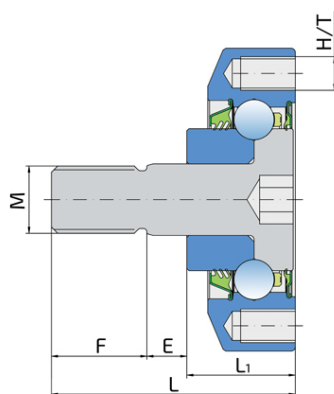
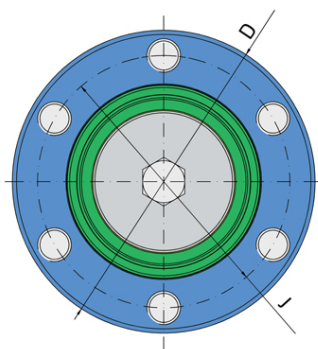


The Bearing Solution For Seeding Machines, Integrated Flange And Shaft

IL10-60/6T-M16-58

The Bearing Solution For Seeding Machines, Integrated Flange And Shaft
Seeding Machine



Technical Specification

| | | |
|------|-------------------------|-----------------------|
| J | Pitch circle diameter | 60 mm |
| D | Outside diameter | 72 mm |
| H/T | Hole/Thread | 6xM8x1 mm |
| M | Outer Thread | M16x1.5 right hand mm |
| L | Total length | 46.5 mm |
| L1 | Total flange length | 23 mm |
| F | Length of threaded part | 21.2 mm |
| kg | Mass | 0.41 kg |
| Cdyn | Dynamic load rating | 32 kN |
| Co | Static load rating | 22 kN |
| Pu | Fatigue load limit | 0.92 kN |

Sealing

S SEAL / DOUBLE T SEAL+STEEL SHIELD

S seal on the base side and double 3-lip seal on the front side which is exposed to contaminants.

S seal on the base side prevents grease from leaking out of the bearing, while the double 3-lip seal gives the better protection than the single 3-lip seal.

Steel shield is additional, strong protection of the double 3-lip seal against mechanical damage.

