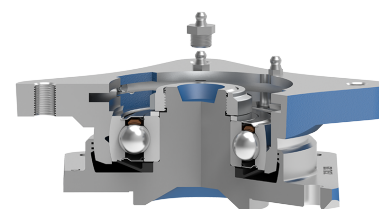
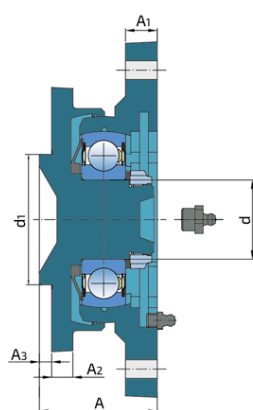
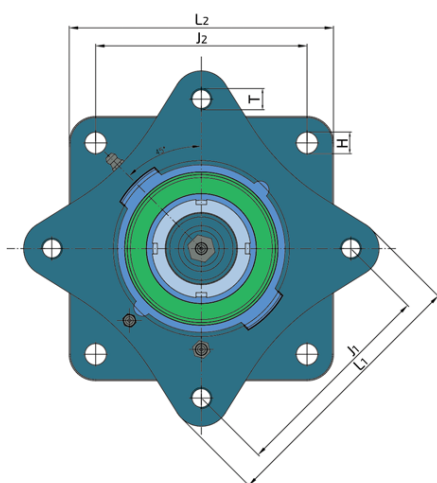
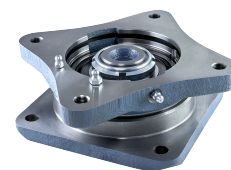


# Bearing Unit

## ZGKU 309 2S

Bearing Unit  
Packer Roller



### Technical Specification

d	Bore diameter	45 mm
d1	Centering diameter	74 mm
L1	Housing overall width	152 mm
J1	Distance between the holes	120 mm
L2	Housing overall width	150 mm
J2	Distance between the holes	120 mm
A	Overall width	66.9 mm
A1	Flange width	18 mm
A2	Flange width	12 mm
A3	Centering diameter height	7 mm
T	Threaded hole size	4xM12x1.25 mm
H	Hole diameter	4x12.3 mm
kg	Mass	5.6 kg
Co	Static load rating	59.6 kN
Cdyn	Dynamic load rating	80.8 kN

## Sealing

### S SEAL / S SEAL (2S)

Single lip seal with the labyrinth between the sheet part and the rubber lip which conducts the contact sealing. The friction and speeds are the same as with RS but provides much better protection against the rough impurity particles. This is very good sealing system: the sheet part protects the seal from the soil, dust and rough particles. At the same time makes the labyrinth with the rubber part. The rubber part provides contact sealing which prevents penetration of finer impurities, water, moisture, steam etc. Suitable for neutral conditions because of the presence of the foreign materials. It is used with the Y bearing (standard) and deep groove ball bearings.

